



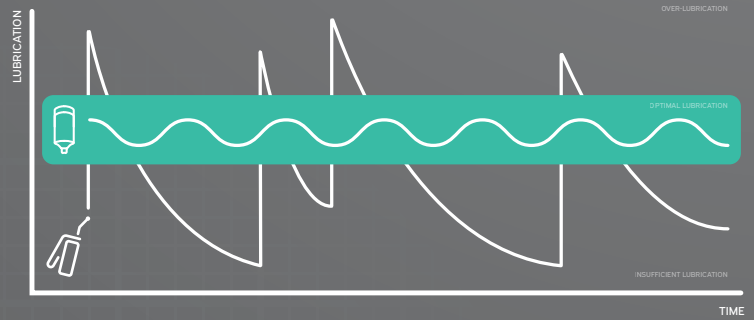
**EFFORTLESS LUBRICATION,
SIMPLY DONE.**

WWW.QUICKLUBER.COM

YOUR FIRST STEP TO BETTER MAINTENANCE.

Manual greasing is one of the most common, and expensive maintenance pitfalls. Inconsistent intervals and imprecise volumes lead to over-lubrication, under-lubrication, and ultimately, premature wear and costly downtime. Quickluber is the smart, entry-level solution that brings consistency to your lubrication strategy.

Quickluber delivers the right amount, at the right time automatically. No guesswork. No gaps. Just reliable performance, longer equipment life, and lower maintenance costs.



EFFORTLESS INSTALLATION

No wiring, no programming – just install and go. Ideal for quick deployment across single lubrication points.



MAINTENANCE-FREE OPERATION

Once activated, it runs continuously without the need for refilling or adjustment during its service life.



COST-EFFECTIVE ENTRY SOLUTION

A practical first step into automatic lubrication, perfect for standard applications and budget-sensitive environments.



COMPACT & VERSATILE

Available in multiple sizes, Quickluber fits easily into tight spaces and adapts to a variety of lubrication needs.

PERFECT FOR ROUTINE LUBRICATION TASKS

Quickluber is designed for straightforward lubrication tasks where ease of use, reliability, and affordability are key. Its self-contained electrochemical system makes it ideal for single-point applications that don't require complex setup or advanced control. From motors to conveyors, Quickluber delivers consistent lubrication in environments where manual greasing is time-consuming or often overlooked. Below are some of the most common use cases where Quickluber adds real value.



ELECTRIC MOTORS

Keep electric motor bearings consistently lubricated in HVAC, production, or utility environments.



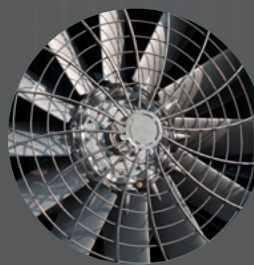
CONVEYOR BEARINGS

Prevents dry running and reduces manual greasing in packaging, food, and intralogistics systems.



CHAINS AND GEAR MECHANISMS

When paired with the right lubricant and brush adapters, we can provide light-duty chain lubrication.



FANS AND VENTILATORS

Maintains smooth operation in air handling units, cooling systems, and exhaust fans.



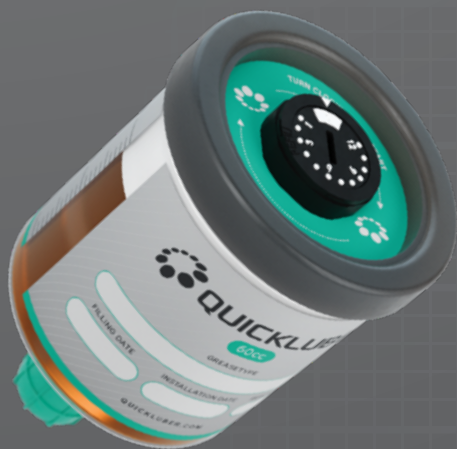
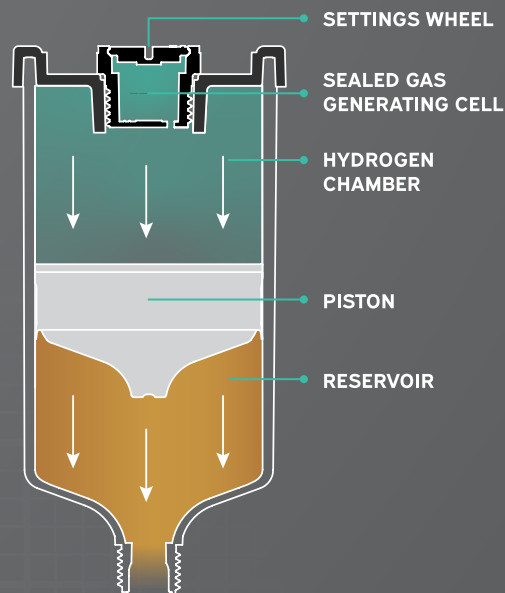
UTILITY MACHINERY

Ideal for smaller equipment in carpentry, machining, or agricultural environments.

THE CORE PRINCIPLE: CONTROLLED HYDROGEN GENERATION.

At the core of Quickluber is a sealed gas cell that activates through a controlled electrochemical reaction. Once triggered, this reaction gradually produces hydrogen, which builds up pressure inside the chamber over time. As the pressure increases, it pushes against an internal piston. This steady force moves the lubricant from the reservoir toward the application point — typically a bearing, gear, or other rotating component.

The process is carefully calibrated to ensure a stable and continuous flow of lubricant over a defined period, from several weeks up to several months, depending on the model and configuration. This makes Quickluber a reliable solution for long-term, hands-free lubrication.



EASY TO INSTALL. EVEN EASIER TO SET.

Quickluber is designed for plug-and-play simplicity: no tools, wiring, or complex setup required. Just attach it to your lubrication point, choose from one of several pre-set discharge durations (Stepless 1-12 months), and let it do the rest. Whether you're maintaining a fan, motor, or small conveyor, Quickluber gets to work immediately, delivering consistent lubrication with zero hassle.

TECHNICAL SPECIFICATIONS



MODEL
30cc

WEIGHT (FULL)
~65gr

WEIGHT (EMPTY)
41gr

DIMENSIONS
56x64x56mm

OUTLET THREAD
BSP G1/4" M



60cc

~100gr

51gr

56x83x56mm

BSP G1/4" M



120cc

~170gr

71gr

56x113x56mm

BSP G1/4" M

POWER GENERATION

Hydrogen gas production dry cell

WORKING PRESURE

Max. 5 bar

FREQUENCY ADJUSTMENTS

Stepless 1-12 months

DISPENSING QUANTITY

0.04 – 8.3 ml/day

OPERATING TEMPERATURE

-20 °C to +55 °C

STORAGE TEMPERATURE

Recommended at 20 °C ± 5 °C

CERTIFICATION / APPROVALS

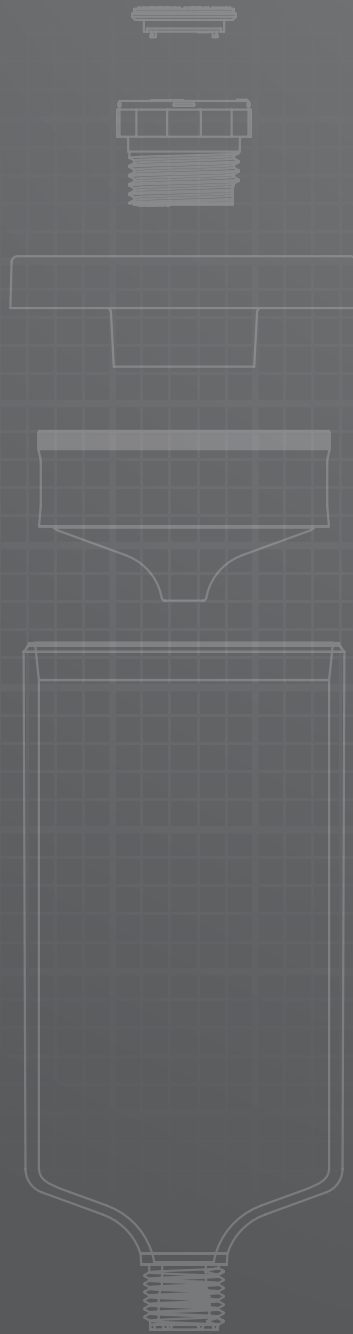
ATEX Certification ongoing.

INGRESS PROTECTION

IP68 (dustproof and waterproof)

USAGE PERIOD

Activation within 2 years of production date.



QUICKLUBER
RUE BOLLINCKXSTRAAT 43
1070 BRUSSELS
BELGIUM

QUICKLUBER.COM



YOUR AUTHORISED DISTRIBUTOR: